



Webbs

Helping people move since 1994

Chase Heights | Hednesford, Cannock | WS12 4QX

Offers In Excess Of £290,000



Summary

** NO CHAIN ** STUNNING DETACHED BUNGALOW ** EXCLUSIVE CUL DE SAC LOCATION ** THREE BEDROOMS ** ENSUITE ** BATHROOM ** LOUNGE DINER ** KITCHEN ** VERY WELL PRESENTED THROUGHOUT ** LANDSCAPED GARDENS **

WEBBS ESTATE AGENTS are delighted to welcome to the market 'Chase Heights', a truly stunning three-bed detached bungalow. This delightful detached bungalow offers a perfect blend of modern living and comfort. Built in 2019, the property boasts a contemporary design and is spread across a generous 807 square feet, providing ample space for both relaxation and entertaining.

Upon entering, you are welcomed into a bright and airy reception room, ideal for family gatherings or quiet evenings in. The bungalow features three well-proportioned bedrooms, each designed to offer a peaceful retreat. The two bathrooms are thoughtfully appointed, ensuring convenience for both residents and guests. The loft is boarded with pull down ladders and lights.

The property is set in a tranquil neighbourhood, making it an ideal choice for families or those seeking a serene lifestyle. With its modern amenities and stylish finishes, this bungalow is not only a home but a sanctuary.

Key Features

- 3 spacious bedrooms
- 2 modern bathrooms
- Cosy reception room
- Detached bungalow
- Built in 2019
- 807 sq ft living space
- Quiet Bradbury Lane location
- Close to Cannock amenities
- Easy access to transport links
- Viewing recommended

Rooms and Dimensions

ENTRANCE HALLWAY

LIVING ROOM

14'9" x 10'5" (4.52 x 3.18)

KITCHEN

13'8" x 8'7" (4.18 x 2.62)

MASTER BEDROOM

10'2" x 10'4" (3.11 x 3.17)

BEDROOM TWO

BEDROOM THREE

9'10" x 7'7" (3.01 x 2.33)

FAMILY BATHROOM

6'11" x 6'3" (2.11 x 1.92)

EN-SUITE TO MASTER

6'11" x 3'11" (2.13 x 1.20)

EXTERNALLY

PRIVATE OFF ROAD PARKING

FULLY ENCLOSED REAR GARDEN

IDENTIFICATION CHECKS - C





Webbs
Helping people move since 1994



Webbs
Helping people move since 1994



Webbs
Helping people move since 1994



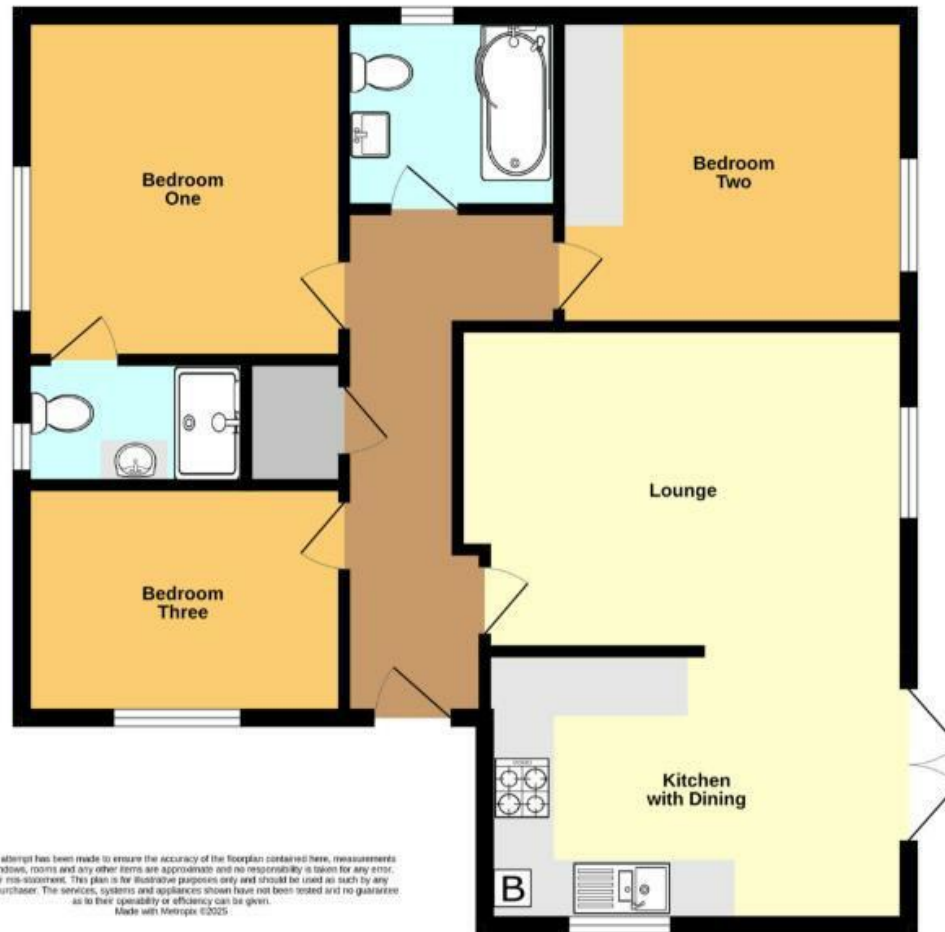
Webbs
Helping people move since 1994



Webbs
Helping people move since 1994



Webbs
Helping people move since 1994



Whilst every attempt has been made to ensure the accuracy of the floorplan contained here, measurements of doors, windows, rooms and any other items are approximate and no responsibility is taken for any error, omission or mis-statement. This plan is for illustrative purposes only and should be used as such by any prospective purchaser. The services, systems and appliances shown have not been tested and no guarantee as to their operability or efficiency can be given.
Made with Metropix ©2025

Webbs Estate Agents - endeavour to maintain accurate depictions of properties in Virtual Tours, Floor Plans and descriptions, however, these are intended only as a guide and purchasers must satisfy themselves by personal inspection.

